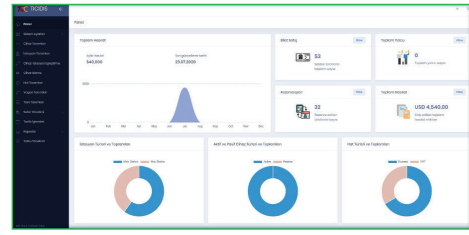
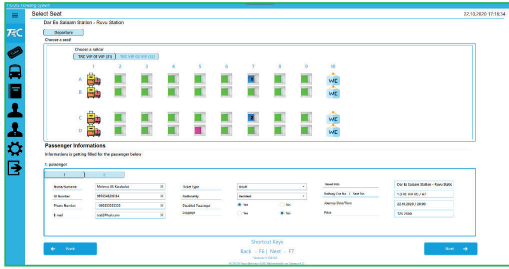




IDIS PERIPHERAL®
**TICKETING AND FARE
COLLECTION SYSTEM**

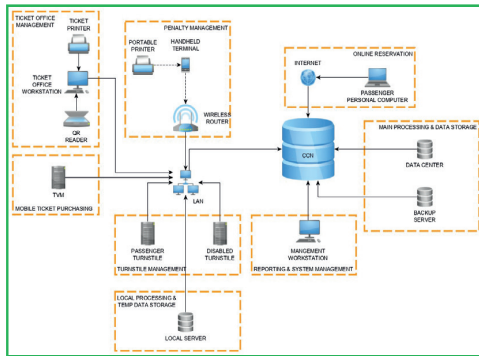


TICKETING AND FARE COLLECTION SYSTEM



Every passenger carrying railway requires a highly secure and reliable ticketing and fare collection system for a successful financial operation.

YM IDIS Advanced Ticketing and Fare Collection System creates journeys, price tables, sales, reservations and issues tickets through a web interface, vending machines and ticket offices. It is also synchronized with the time-table management and other operational systems. All stations have local servers for emergency situations and redundant data servers.



Management Panel

This section controls ticket offices, TVM and Online Sales/Reservation.

- Management Panel Sections;
 - System Configurations
 - Device Management
 - Journey Management
 - Train Management
 - Price Table
 - Reports

Box Office

- QR/Rfid Ticket Sale
- QR/Rfid Ticket Reservation
- Ticket Sale with Reservation Code
- QR/Rfid Ticket Cancellation
- QR/Rfid Ticket Control



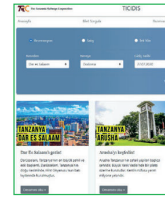
Ticket Vending Machine

- QR/Rfid Ticket Sale
- Ticket Sale with Reservation Code
- Advertisement Section for client



Online Ticket Sale/Reservation

- QR/Rfid Ticket Sale
- Ticket Sale with Reservation Code
- Advertisement Section for client



Configurations

- Central / Local Data Server
- Box Office
- TVM
- Online Sales/Reservation
- Handheld Terminal
- Reporting Management

Penalty Management

- QR/Rfid Ticket Control
- Create penalty for stove away passenger



Turnstile

- QR/Rfid ticket pass
- Ticket Validation



Features

- Passenger Classification
- Timetable Management
- Reporting System
- Ticket Design
- Reschedule / Refund Options
- Dynamic User Roles for Management
- Onboard Ticket Validation
- System Diagnostic Monitoring
- Cash / Credit Card Payment
- Local Payment System Adaptation
- RFID Card Tickets
- Advertisement Area

Functions

- Set Configuration (e.g 4/8 wagon)
- Timetable - Journey Configuration
- Price Table Management
- Passenger Type Assignment
- Ticket Sales / Reservation / Cancellation
- Online Sales
- Online Reservation
- Seat Selection
- Ticket Control
- Create New User Role / Authorization
- Passenger Throughput Reports

Advantages/Benefits

- Adjustable Reporting System
- Ticket Design Changes for Special Days/Sessions
- Dynamic User Roles
- Local Server Handover in case of a malfunction
- User Friendly Screens
- Diagnostic System

Configurations

- Central / Local Data Server
- Box Office
- TVM
- Online Sales/Reservation
- Handheld Terminal
- Reporting Management

References

- Awash - Kombolcha - Hara Gebaya Railway / Ethiopia
- Dar es Salaam - Morogoro Railway / Tanzania
- Morogoro - Makutupora Railway / Tanzania